

Energy saving and greenhouse gas mitigation potential on the drinking water network of the Novi Sad Water Utility

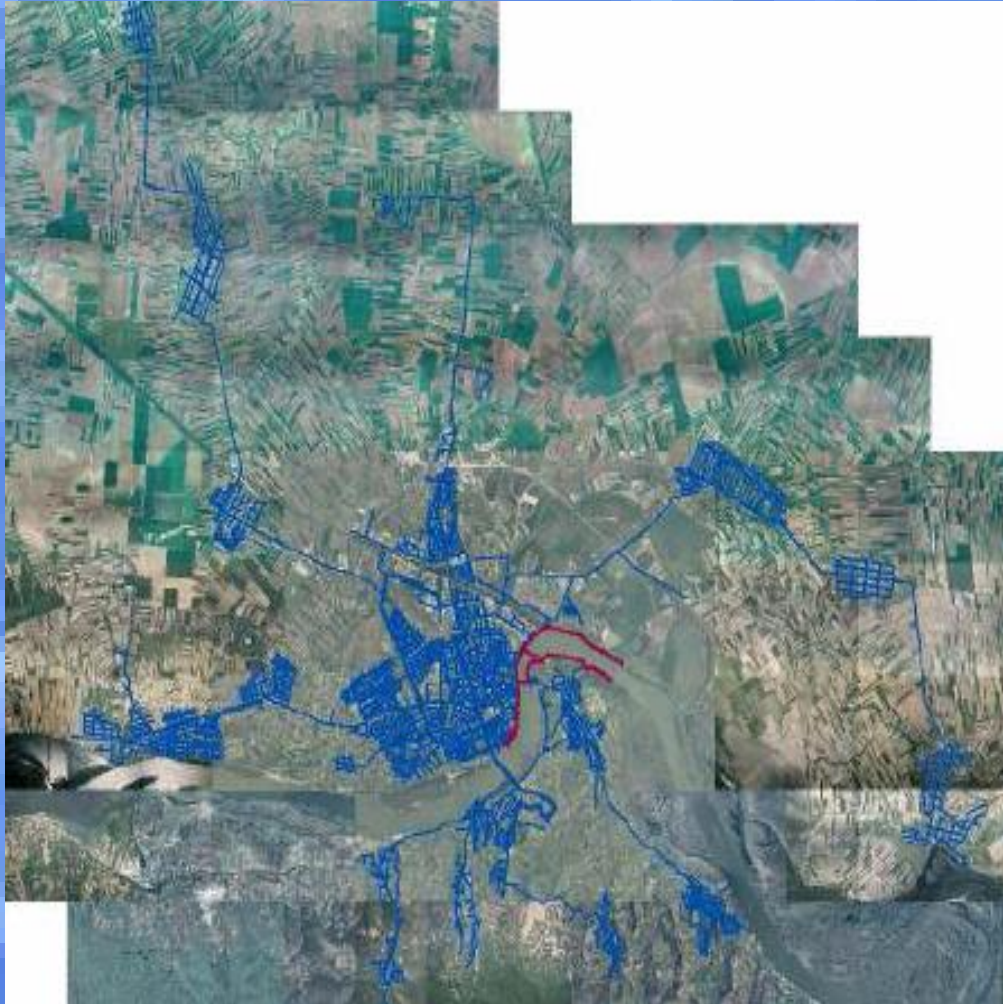
Zlatko Arvaji

PUC 'Waterworks and Sewerage'

Novi Sad, Serbia

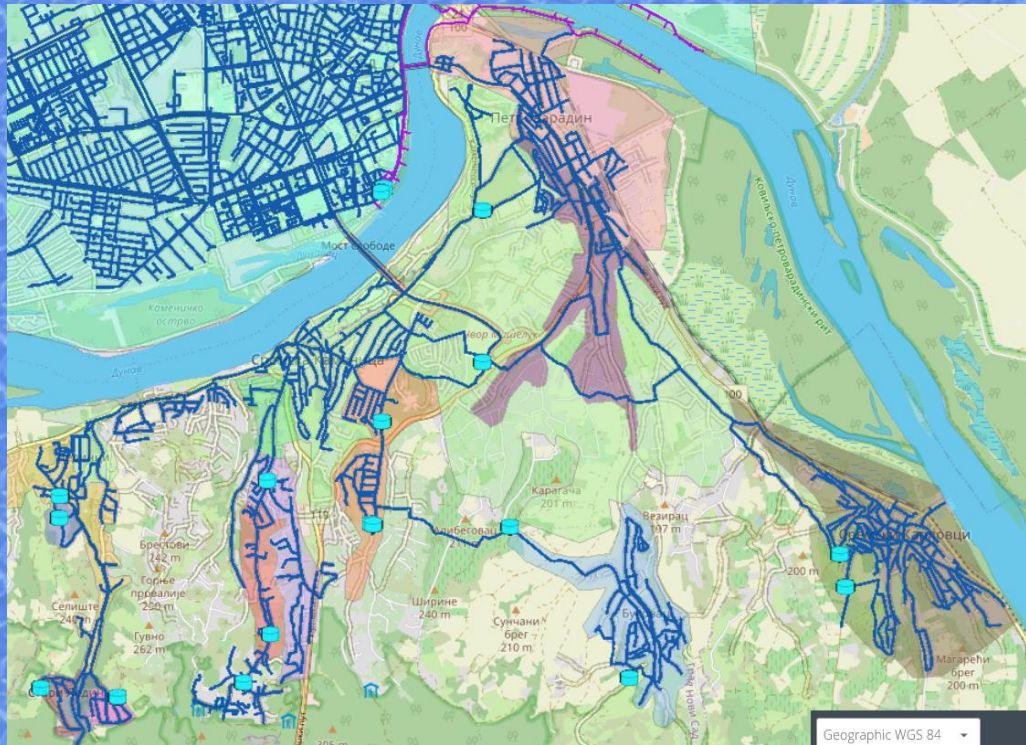
30.6.2021.

WATER SYSTEM NOVI SAD



- 400,000 population
- 1,500 l/s capacity
- 1,200 km pipelines
- 55,000 services
- $NRW_{2020} = 30\%$

SREM WATERNET AREA

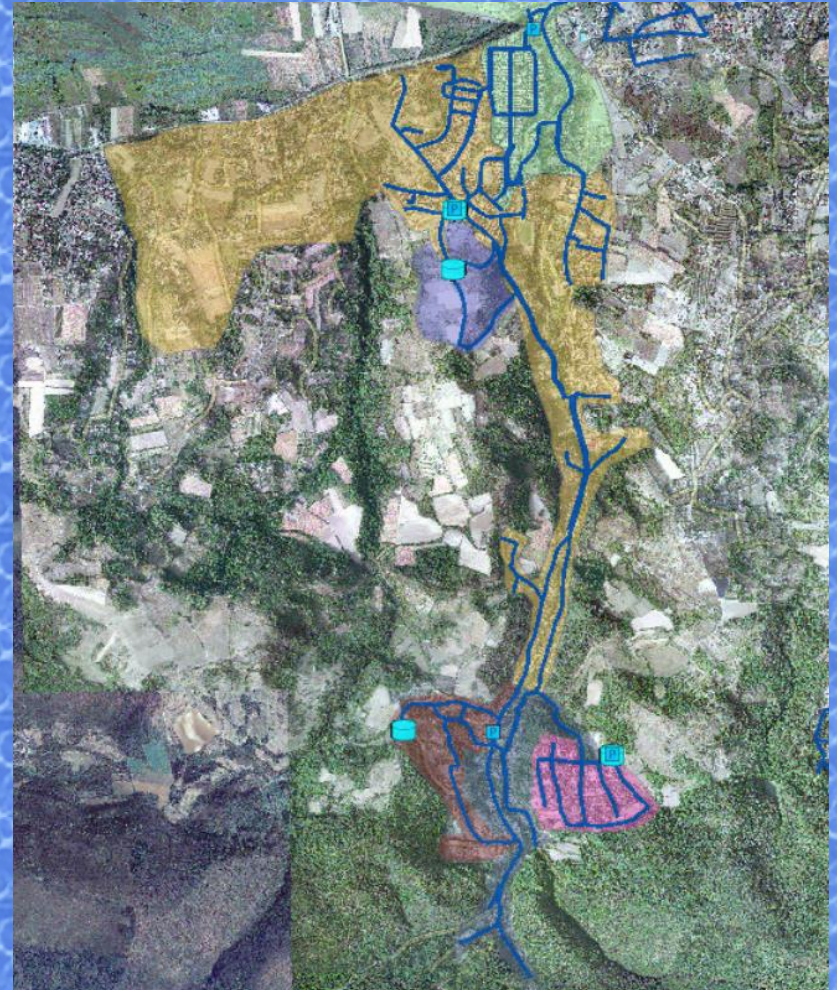


- NETWORK LENGTH 200km
- 15.000 CONNECTIONS
- 15 RESERVOIRS
- 14 PUMP STATIONS
- 15 PRESSURE ZONES
- 60.000 POPULATION?

SREM WATERNET AREA

- **EXTREME COMPLEX SYSTEM FOR MODELING**
- **ABOVE AVERAGE WATERLOSSES >30%**
- **PRESSURE 2.5-7.0 Bar**

- **BIG GIS DATA BASE OF VIKNS**
- **ESTABLISHED DMAs for EVERY SETTLEMENT**
- **SCADA ON-LINE MEASUREMENTS OF FLOW AND PRESSURE – CALIBRATION**



GIS DATA BASE

File Edit View History Bookmarks Tools Help

Energy saving and greenhouse x VIK Novi Sad Google pretraživač W Kah—Википедија x +

gis.vikns.rs/visios/vikns 120% Search

Most Visited Getting Started Other Bookmarks

ViK Novi Sad

Unutar U preseku

Slojevi: Svi potrošači Bafer (m): 0

Prikaži rezultate u drvetu

Sadržaj mape

- VIKNS
 - KOMERCIJALA
 - PROJEKTI IZVEDENIH STANJA
 - JKP VIK
 - IZVORIŠTA
 - VODOVOD
 - Hlorne stanice
 - Pumpne stanice
 - Rezervoari
 - Zatvarači
 - Hidranti
 - Bunari
 - Merači pritiska
 - Merači protoka
 - Čvorovi
 - Priključci
 - Vazdušni ventili
 - Cevi po rangu
 - Vodovodne cevi
 - Šahtovi vodovod
 - Reoni OVM
 - ZONE PRITISAKA I POTROŠNJE
 - VODOVOD - RADOVI
 - KANALIZACIJA

Kliknite na kartu da započnete crtanje

Geographic WGS 84 X: 19.8103 Y: 45.1842 Razmera 1: 2257 Pronađi mesto ili adresu

Type here to search 14:48 25.06.2021



**Sustainable
development is
possible only if the
potentials of men and
nature are not in
conflict**

THANK YOU